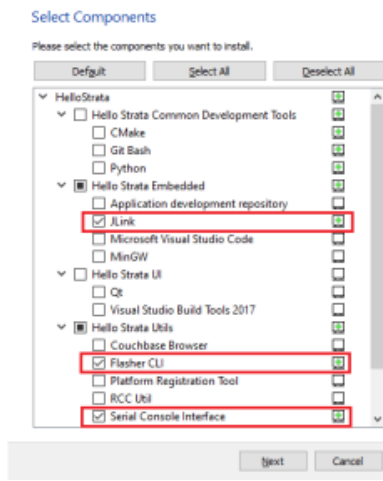
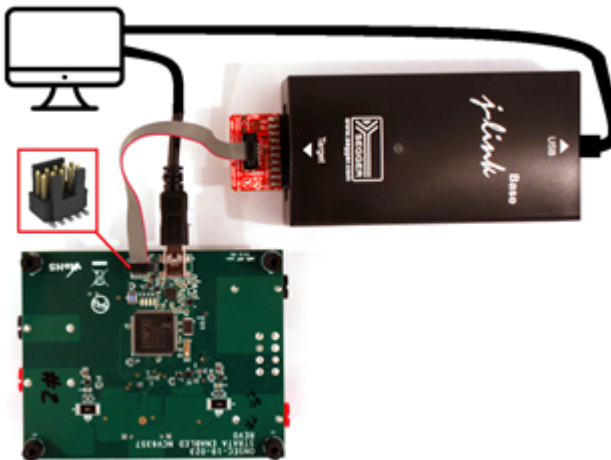


How to Flash RTP Boards with Bootloader without PRT

1. Download [HelloStrata](#) from here (contact ON Semiconductor if you are an external CM for a download link)
2. Install only the following components: JLink, Flasher CLI, and Serial Console Interface
 - a. NOTE: if you already have Hello Strata installed you may need to uninstall it from "Add or remove programs" in Windows



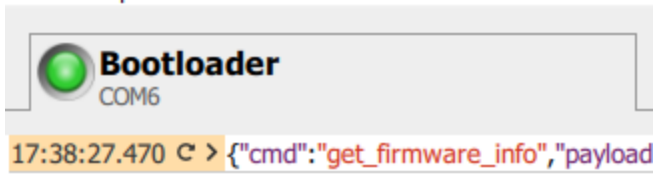
- b.
3. Ask ON Semiconductor for bootloader.bin binary file and flash with JLink
 4. Connect JLink USB + mini USB to the computer. Then connect the 10pin debug header to from JLink to platform.



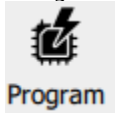
- a.
 - b. Run JLink.exe, path may change with software version
 - i. For example = "C:\Program Files (x86)\SEGGER\JLink_Vxxx\JLink.exe"
 - ii. Type the following
 1. connect
 2. EFM32GG380F1024
 3. S
 4. 4000 kHz (default)
 5. loadbin "C:\<full path to bootloader.bin>", 0x0
- ```
J-Link>loadbin "C:\<full path to bootloader.bin>", 0x0
Downloading file
J-Link: Flash dow
J-Link: Flash dow
O.K.
J-Link>
```
5. Open Serial Console Interface (SCI) and ensure the board is detected as "Bootloader"

## Serial Console Interface

File Help



- a. 17:38:27.470 C > {\"cmd\": \"get\_firmware\_info\", \"payload
6. Contact ON Semiconductor and obtain <application.bin> firmware binary file
7. Program the board using SCI
  - a. Click the "Program" button in SCI



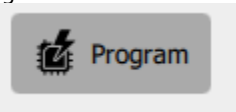
- i.
  - b. Browse to and select <application.bin> file in "Firmware data file"

### Program New Firmware

Firmware data file

C:\Users\fg376t\Documents\SEC Board Designs\ONSEC-19-016\_Strata\_LED\_NCV768X\REV1\data\led\_tail\_light-release.bin

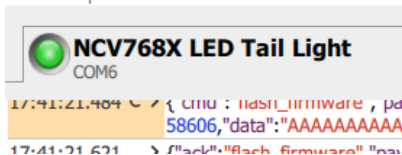
- i.
  - c. Click Program



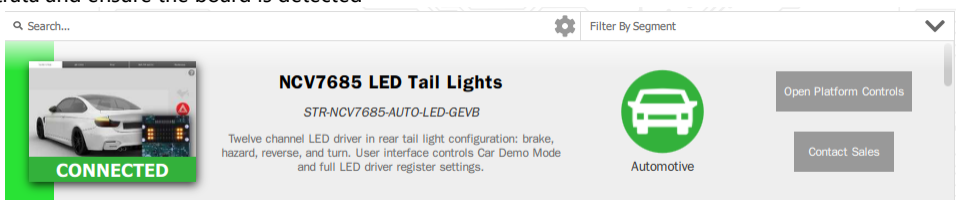
- i.
  - d. Click Back and the board should now be detected as name other than "Bootloader"

## Serial Console Interface

File Help



- i. 17:41:21.404 C > {\"cmd\": \"flash\_firmware\", \"pd 58606, \"data\": \"AAAAAAAAAA
8. Copy the "set\_platform\_id" command from the "production\_validation.pdf" document provided in the Strata downloads section for that board. Here is a generic example:
  - a. {\"cmd\": \"set\_platform\_id\", \"payload\": {\"platform\_id\": \"00000000-0000-0000-0000-000000000000\", \"class\_id\": \"00000000-0000-0000-0000-000000000000\", \"board\_count\": 0}}
9. Open Strata and ensure the board is detected



- a.
  10. Continue with the rest of the validation in the "production\_validation.pdf" document

